

LayerVoyager

Contents

中文版.....2

英文版.....11

LayerVoyager

軟體使用說明書

版本：v2.0.X

概述

- 畫面說明
- 檔案、工具、設定、幫助

基本操作

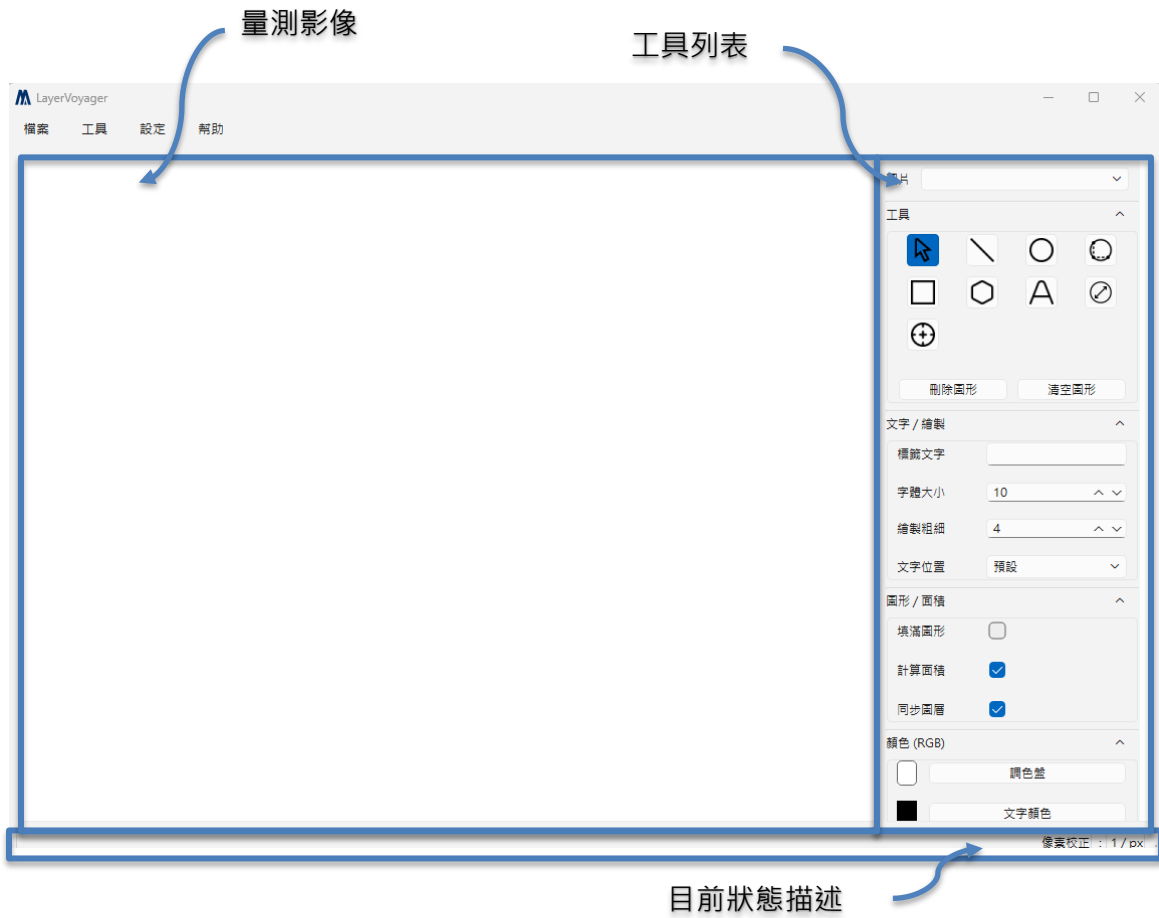
- 啟動程式並載入影像
- 選擇量測或標註工具
- 執行量測並查看結果
- 儲存影像

備註

- 系統需求
- 注意事項

概述

畫面說明



檔案

1. 開啟影像

- Open 開啟影像格式支援 *.pkg
- 一個 *.pkg 可能會包含多的圖片

2. 儲存影像

- 儲存當前畫面的影像

工具

1. 工具

| 名稱 | 描述 |
|------|--|
| 選取 | 選取已繪製在圖上的物件(鼠標出現手指時)，用以做後續調整 |
| 直線 | 用直線做量測，可在兩端點鼠標出現手指時，調整量測位置 |
| 矩形 | 用矩形做量測 |
| 圓形 | 用圓形做量測 |
| 三點正圓 | 用圓形做量測，先點選要量測圓的邊緣任意兩點，這時在點第三次不放之後即會出現圓，可拖曳到想要位置再放開滑鼠 |
| 直徑 | 量測圓形的兩端點長度 |
| 多邊形 | 用多邊形做量測，要結束時直接點擊兩次即可 |
| 標籤 | 顯示文字在圖中 |
| 校正 | 依據比例尺，在圖上畫一條等長的線段，設定長度和單位 |

2. 圖形 / 面積

- 填滿圖形：針對矩形、圓形、三點正圓、多邊形，將中間部分塗滿
- 計算面積：針對矩形、圓形、三點正圓、多邊形，計算所框選部分之面積；針對直線、直徑部分，則是計算長度
- 同步圖層：在此軟體中可以切換不同圖片，在相同位置上，若有勾選則繪製的物件會在所有圖片上顯示，反之只會在該張圖上顯示

3. 顏色(RGB)

- 調色盤：修改量測物件上的線段顏色
- 文字顏色：修改顯示文字的顏色
- 背景顏色：修改顯示文字後方的背景顏色

4. 文字 / 繪製

- 字體大小：顯示文字的大小
- 繪製粗細：量測物件上的線段粗細
- 文字位置：顯示文字在量測物件上的位置，位置如下圖示意

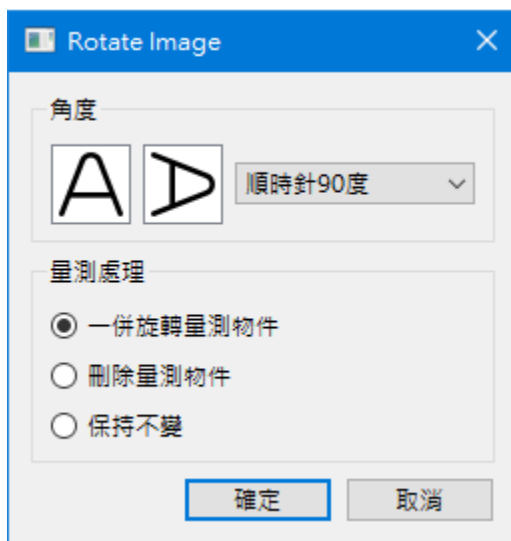


- 標籤文字：僅針對標籤工具做使用

設定

1. 旋轉影像

- 針對所有載入影像做旋轉，僅支援 90、180、270 度的旋轉
- 已量測項目也可選擇跟著移動、刪除、不變
- 旋轉後 Undo 會清空，請注意



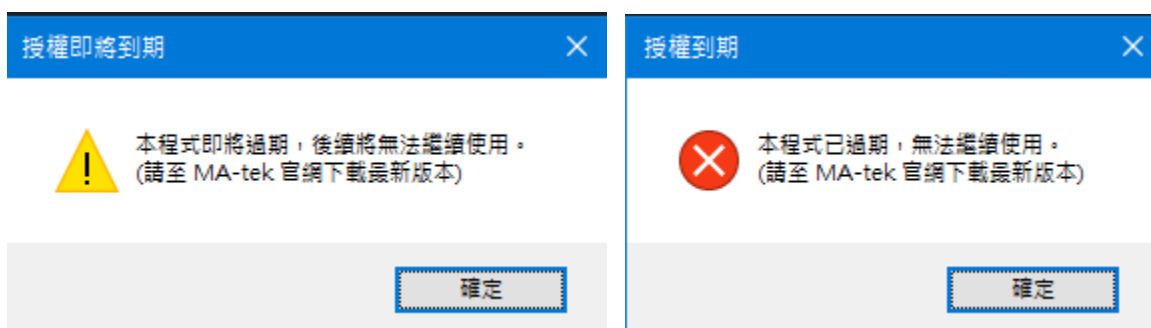
2. 語言

- 做整個語系切換，目前支援繁中、英文、簡中

幫助

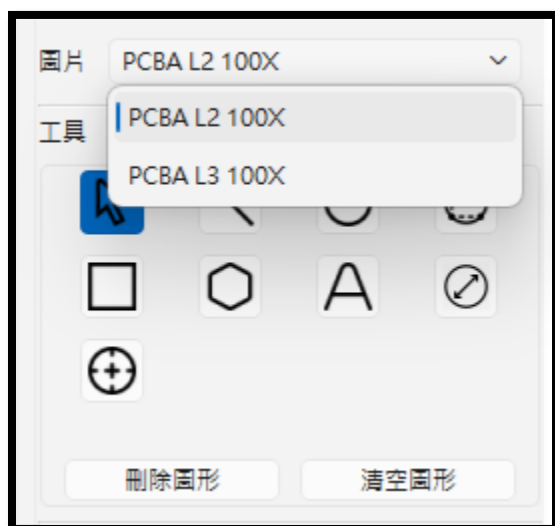
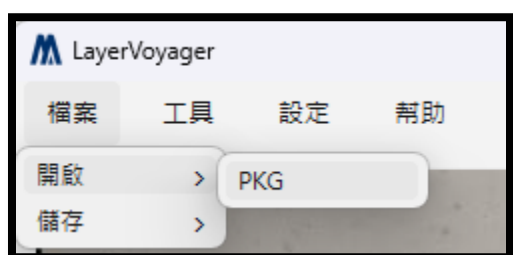
1. 點擊後開啟快捷鍵說明文件

基本操作



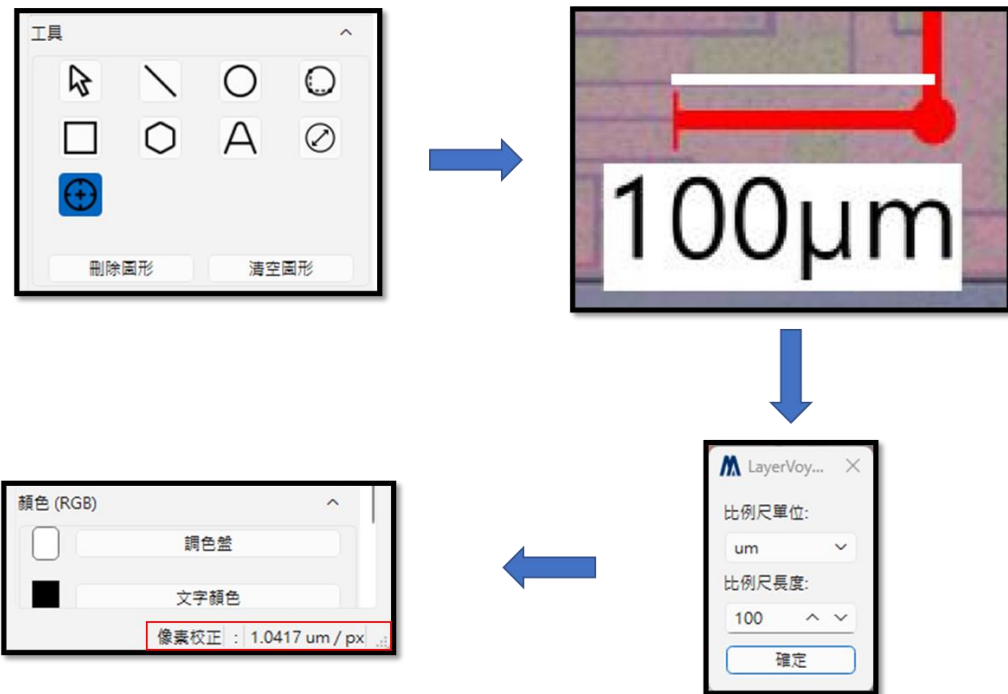
1. 啟動程式並載入影像

- 若發現開啟時有上方兩種視窗時，表示程式授權已到期或快到期。若為左圖，雖會跳出警示訊息但按下確認還使可以正常使用；若為右圖，程式會自動關閉，這時請依訊息上的說明至 MA-tek 官網上下載最新版本
- 點選開啟影像，開啟後可下拉切換圖片，也可以按住 Tab 鍵，以滾輪做切換



2. 選擇量測或標註工具

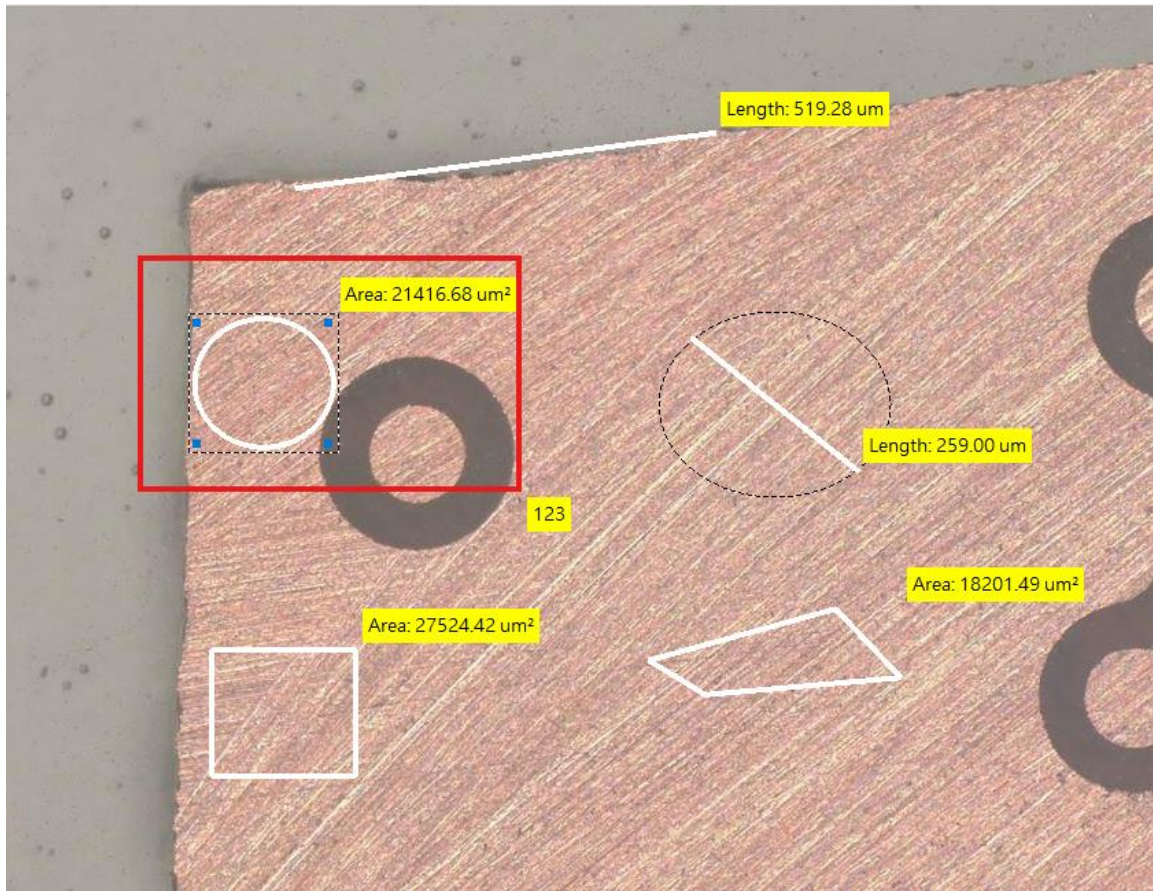
- 先選取校正，找到比例尺，並拉出同等長度的直線，並將數值填入點選確認



- 後續就可直接針對感興趣物件做量測了

3. 執行量測並查看結果

- 量測結果會即時顯示在圖片中
- 量測好的物件後續是皆可拖曳、修改，只有多邊形只能做拖曳請注意，但皆可更改顏色、大小、粗細等...基本功能
- 多邊形結束時，只須點及兩次即可(這一次也算是一個點)
- 要更改量測物件的基本參數時，需先選取要修改的物件，如下圖紅框，會出現黑色虛線包裹住



4. 儲存影像

- 會依據當前所顯示的圖片做存檔
- 一次存一張圖
- 儲存影像在解析度方面會有所下降，請注意

備註

✧ 系統需求

- ✚ 作業系統：Windows 10 / Windows 11
- ✚ 硬體建議：8GB RAM 以上
- ✚ 顯示建議：Full HD 以上解析度

✧ 注意事項

- 大型影像操作時請留意系統效能
- 若在圖片顯示上有異常，可按清空圖片按鈕試試，或直接將載入影像資料夾中 temp 檔刪除，temp 是記錄所有量測資訊的檔案
- 存檔時不能有中文路徑

LayerVoyager

Software User Manual

Version : v2.0.X

Overview

- Interface Description
- File 、 Tools 、 Settings 、 Help

Basic Operations

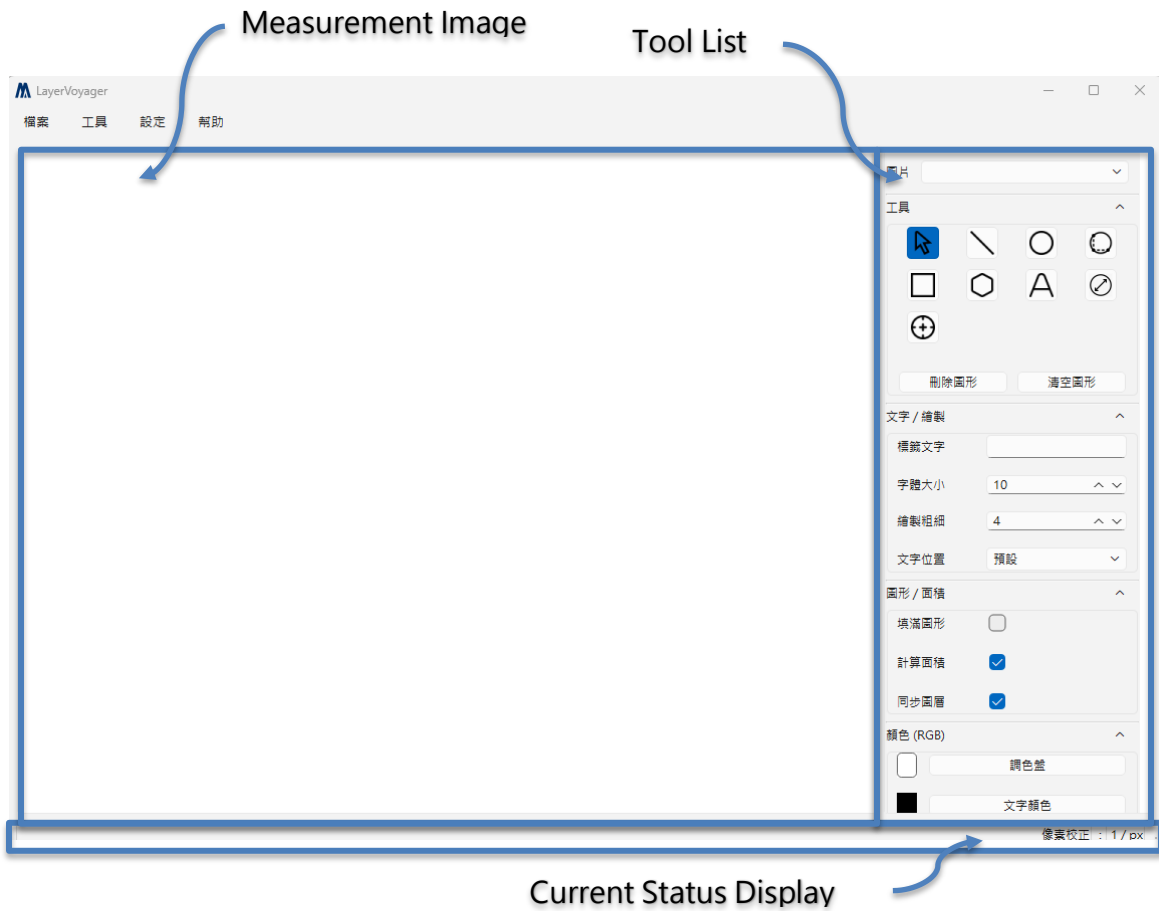
- Launch Program and Load Image
- Select Measurement or Annotation Tool
- Perform Measurement and View Results
- Save Image

Notes

- System Requirements
- Important Notes

Overview

Interface Description



File

1. Open Image
 - Supports opening image files in *.pkg format.
 - A single *.pkg file may contain multiple images.
2. Save Image
 - Save the currently displayed image.

Tools

1. Tools

| TOOL | DESCRIPTION |
|---------------------------|--|
| SELECT | Select objects drawn on the image (cursor changes to a hand icon) for adjustment. |
| LINE | Perform measurements using a straight line. Endpoints can be adjusted when the cursor becomes a hand icon. |
| RECTANGLE | Perform measurements using a rectangle. |
| CIRCLE | Perform measurements using a circle. |
| THREE-POINT CIRCLE | Measure a circle by selecting any two edge points first. Click and hold the third point to generate the circle, then drag to adjust position before releasing the mouse. |
| DIAMETER | Measure the diameter length of a circle. |
| POLYGON | Measure using a polygon. Double-click to finish drawing. |
| LABEL | Display text annotations on the image. |
| CALIBRATION | Draw a reference line according to a scale bar and set the actual length and unit. |

2. Shape / Area
 - Fill Shape :
 - Fill the interior area of rectangles, circles, three-point circles, and polygons.
 - Calculate Area :
 - Rectangle / Circle / Three-Point Circle / Polygon → Calculate enclosed area
 - Line / Diameter → Calculate length
 - Layer Synchronization :

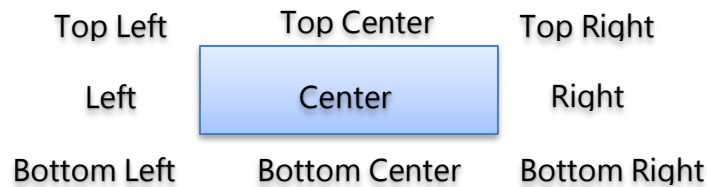
- The software allows switching between different images.
- When enabled, drawn objects appear on all images at the same position.
- When disabled, objects appear only on the current image.

3. Color (RGB)

- Palette — Change measurement object line color
- Text Color — Change annotation text color
- Background Color — Change text background color

4. Text / Drawing

- Font Size — Text display size
- Line Width — Thickness of measurement lines
- Text Position Options

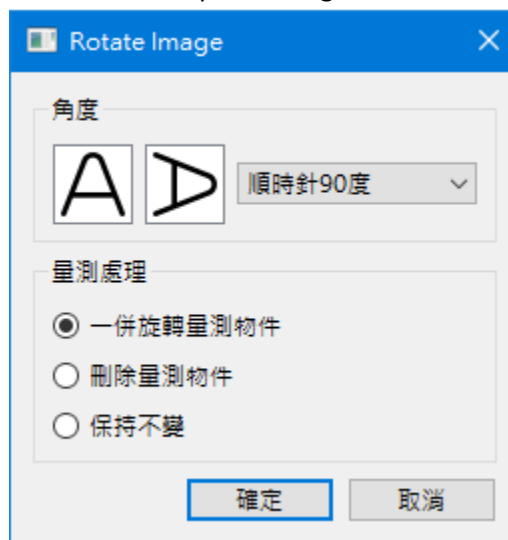


- Label Text — Used only with the Label Tool.

Settings

1. Image Rotation

- Rotates all loaded images, supporting only 90, 180, and 270 degree rotations.
- Measured items can also be moved, deleted, or left unchanged.
- Be advised that performing a rotation will reset the undo buffer.



2. Language

- Switch application language.
 - Currently supported:
 1. Traditional Chinese
 2. English
 3. Simplified Chinese

Help

1. Open the shortcut key reference document.

Basic Operations

1. Launch Program and Load Image

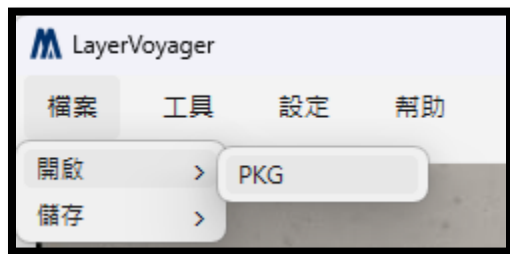


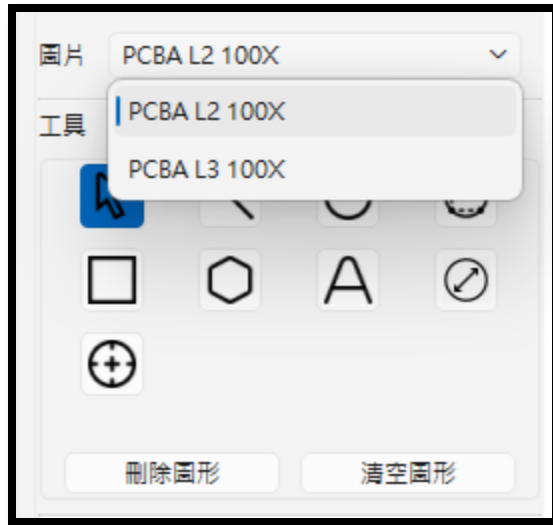
If one of the two warning windows appears during startup, it indicates that the software license has expired or is about to expire.

- Left Warning Window:
 - A warning message appears, but the software can still be used after confirmation.
- Right Warning Window:
 - The program will automatically close.
 - Please follow the instructions to download the latest version from the MA-tek official website.

After opening an image:

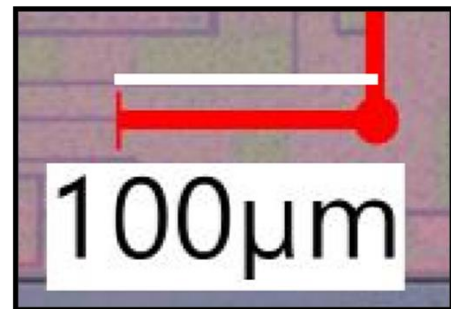
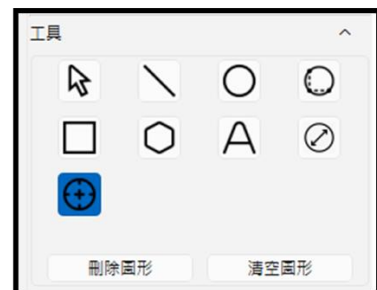
- Use the dropdown menu to switch images.
- Hold the Tab key and scroll the mouse wheel to switch images quickly.





2. Select Measurement or Annotation Tool

1. Select Calibration first.
2. Locate the scale bar in the image.
3. Draw a reference line with the same length.
4. Enter the actual value and confirm.



- After calibration, measurements can be performed directly on objects of interest.

3. Perform Measurement and View Results

- Measurement results are displayed in real time on the image.
- Measured objects can be:
 - dragged
 - modified
 - resized
 - recolored
 - adjusted in line thickness

⚠ Note:

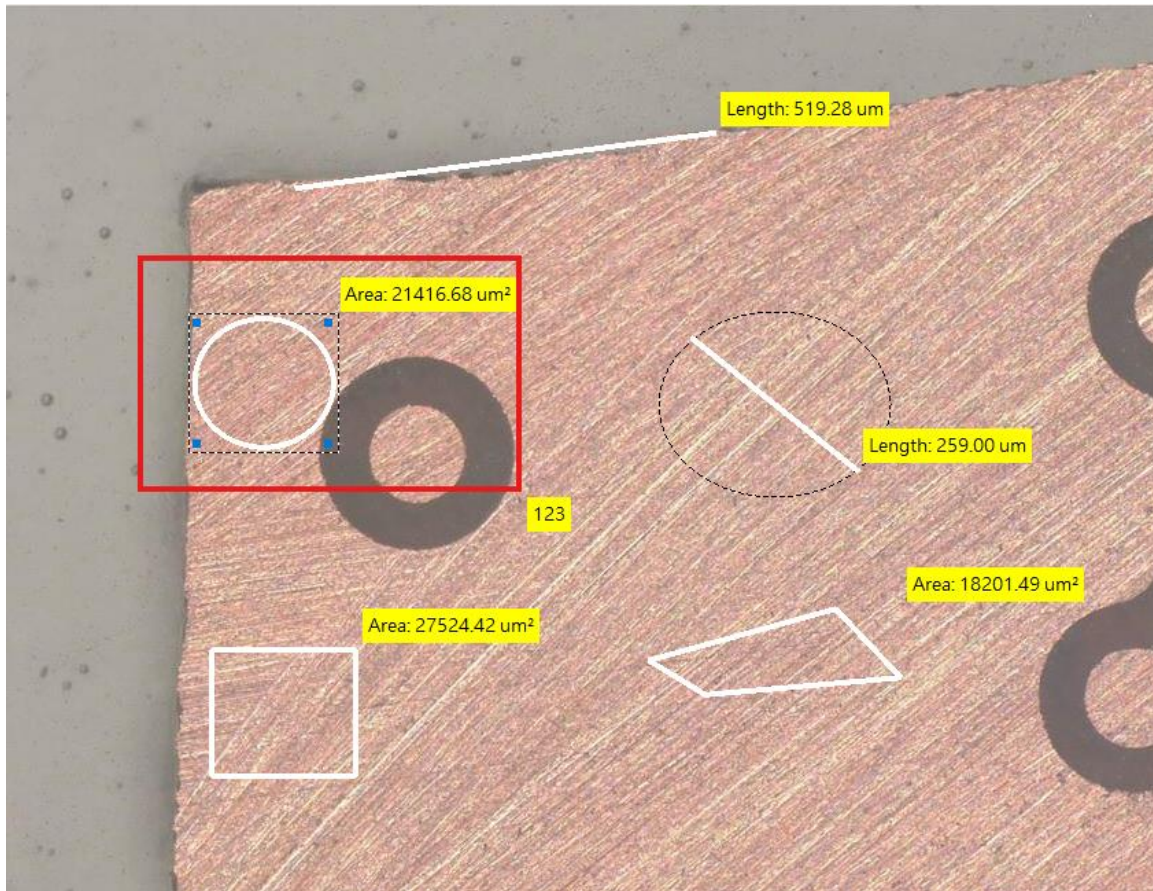
Polygons can only be moved after creation (no vertex editing).

Polygon Completion

- Double-click to finish drawing (the final click also counts as a point).

Editing Measurement Parameters

- Select the object first.
- A dashed black selection box will appear around it.



4. Save Image

- The saved file corresponds to the currently displayed image.
- One image is saved at a time.
- Saved images may have reduced resolution.

Notes

✧ System Requirements

- 🔧 Operating System: Windows 10 / Windows 11
- 🔧 Recommended Hardware: 8 GB RAM or above
- 🔧 Display Recommendation: Full HD resolution or higher

✧ Important Notes

- Large images may impact system performance.
- If image display issues occur:
 - Click Clear Image, or
 - Delete the temp folder inside the loaded image directory.

The temp folder stores all measurement information.

⚠ Saving is not supported when the file path contains Chinese characters.